



X-TRAIL





All-New Nissan X-Trail with e-POWER. Fit in more family adventure

Introducing Nissan's latest family adventure crossover, powered by either unique e-POWER technology for a quiet, electrified drive with no need to plug, or Mild Hybrid engine, for invigorating performance and low emissions.

For superior control and a unique electrified experience, choose e-4ORCE technology, the all-wheel drive version associated to e-POWER.

All-New Nissan X-Trail is a spacious crossover with up to seven seats*, and everything you need to keep your family safe and comfortable with advanced Nissan's safety technologies.

With cutting-edge connectivity* to keep everyone entertained, the All-New Nissan X-Trail shows that family-friendly trailblazing is possible.



*Feature available depending on version, as standard or only as option (at an extra charge).

Never compromise on style, in the All-New Nissan X-Trail

Get noticed wherever you go with sleek LED headlights, distinctive and imposing front air vents and robust, yet crafted lines. Up front, the unmistakable V-motion grille bears the familiar signature of Nissan's exciting design DNA, to show that this electrified family crossover refuses to blend into the background.



Strong front fascia



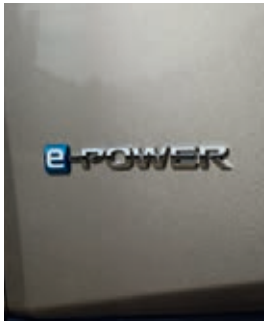
20" Alloy Wheels*



Front Signature lamps



Rear Signature lamps



e-Power badge*



e-4ORCE badge*



**Feature available depending on version, as standard or only as option (at an extra charge).*



Close the door on the chaos outside

With up to 35"* of interior displays to supplement your drive, you're guaranteed to experience Nissan technology at its best. Enjoy advanced Nissan Driver Assistance* and HD navigation* displayed right in your view as you settle into your comfortable, ergonomically designed seat. Wondering where to place your belongings? Don't miss the storage space beneath the floating central console. Inside the X-Trail's cabin, it's all about quality details – the relaxing atmosphere of ambient lighting*, the soft feel of premium materials and the seamless convenience of wireless charging* for your smartphone.



15W fast wireless charger**



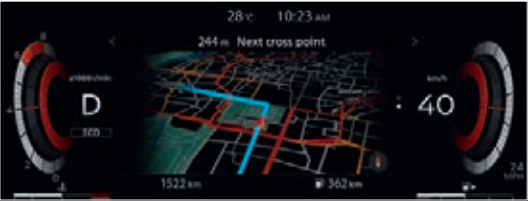
Ambient lighting*



12.3" Fully digital meter*
10.8" Windscreen Head-up display*



12.3" HD NissanConnect display*



Navigation*



Driving Aids*

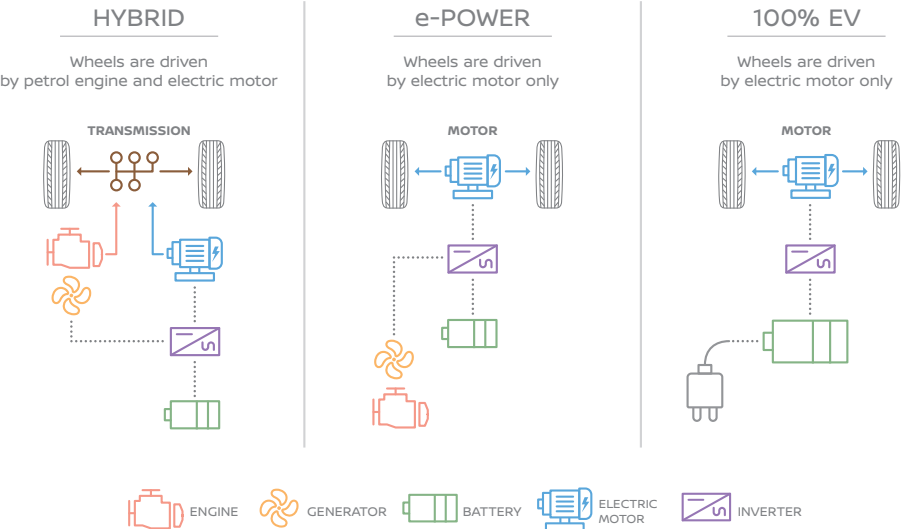
**Features available depending on version, as standard or only as option (at an extra charge).*

***Designed to the Qi charging standard & optimised for Qi certified devices. For non-Qi certified devices, wireless charging performance can be limited.*



The unique electrified experience, now unplugged. This is Nissan e-POWER

With Nissan e-POWER, pioneering doesn't have to pause. e-POWER is a unique electrified technology composed of a fuel efficient petrol engine charging a battery. The battery then provides electricity to a motor driving the wheels. The result is a responsive and quiet driving sensation without the need to plug or recharge. Just exhilarating and stress-free driving with no compromise on fuel economy.



Digital combimeter with energy flow*



SIMPLIFY YOUR DRIVE, WITH E-PEDAL STEP
Experience a more intuitive way to drive. Unique to Nissan, e-Pedal Step gives you the option to accelerate and decelerate effectively with just the accelerator pedal at speeds above 10km/h. Meanwhile leaving the brake pedal for harder braking and coming to a complete stop.

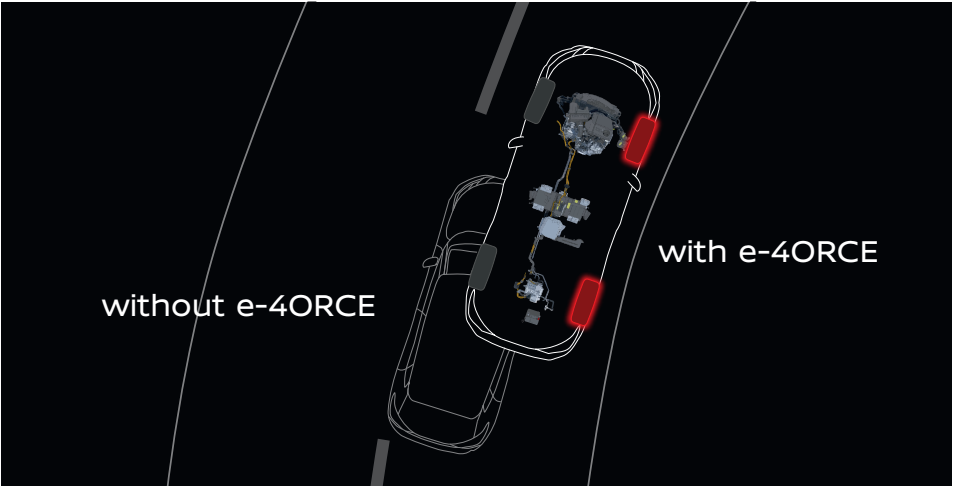
*Features available depending on version, as standard or only as option (at an extra charge).
Combined WLTP min/max fuel consumption (l/100km) : 5.9-6.0L // CO₂ combined WLTP min/max (g/km) : 134g-136g (FOR MARKETS TO LOCALISE)
Nissan XYZ XX hp, gasoline/diesel: fuel consumption (l/100 km): low: X,X; medium: X,X; high: X,X; maximum: X,X; combined: X,X; CO₂ emissions combined (g/km): XXX. Nissan XYZ: fuel consumption combined (l/100 km): X,X-X,X; CO₂ emissions combined (g/km): XXX-XXX. Vehicle has been homologated in accordance with EU regulations using the more realistic WLTP test procedure. NEDC values are therefore not available for this vehicle.

Reinvent your all-wheel drive experience, electrified. With e-4ORCE

Playgrounds are not meant to have boundaries. Take on new terrains in confidence with Nissan's unique all-wheel drive technology, now available on X-Trail. e-4ORCE* delivers the perfect balance between powerful and unprecedented control, with a smooth ride for all family thanks to superior handling on any surface. Tailor your drive even further with 5 selectable Drive Modes, including Normal, Sport, Eco, Off-road and Snow Mode for unmatched levels of comfort.



4x4 Drive mode wheel switch*



**Feature available depending on version, as standard or only as option (at an extra charge).*



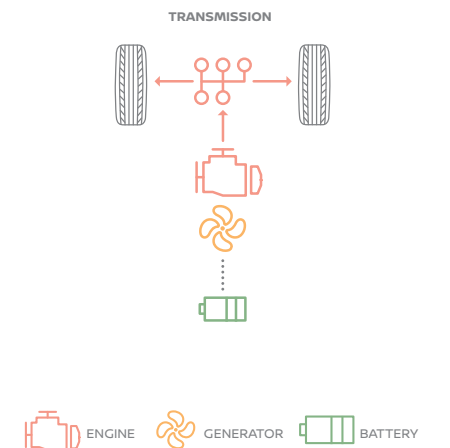


Mild Hybrid: Excitement and efficiency, without compromise

Why choose between an invigorating drive and fuel efficiency? With X-Trail's new Mild Hybrid 1.5L Variable Compression 3 cylinder engine you can have both. Mild hybrid technology provides torque assist when accelerating, while the lithium-ion battery and starter generator optimise the engine shut-down situations to improve efficiency. The unique variable compression ratio alternating between 8:1 and 14:1 is a true engineering marvel dedicated to efficiency and driving excitement.

mHEV(12v)

Wheels are driven
by electric motor only



Combined WLTP min/max fuel consumption (l/100km) : 7,1 - 7,2
CO₂ combined WLTP min/max (g/km) : 161 - 164



Safety First is Second Nature

The All-New Nissan X-Trail is equipped with advanced ProPILOT* with Navi-link safety technologies designed to read the road ahead and adjust your drive accordingly, keeping you and your family safe for maximum peace of mind.

ProPILOT Park** makes journeys with the family even easier. It can automatically detect a parking space that fits and then manoeuvre you effortlessly in with fully automatic control of the steering, braking and accelerator. And thanks to Around View Monitor**, all-round reassurance comes from a 360° view of your car with selectable focus on front, rear and kerbside views.



INTELLIGENT CRUISE CONTROL keeps your distance by measuring the space from the vehicle ahead, controlling acceleration and deceleration to automatically maintain a suitable following distance within your set speed.



INTELLIGENT FORWARD COLLISION WARNING keeps an eye on up to two vehicles in front of you. If the system detects a sudden deceleration ahead, you hear an audible and visual warning to slow down.



REAR AUTOMATIC BRAKING helps you back-up with confidence. If a stationary object is detected behind your vehicle, the system can automatically engage the brakes to help avoid a collision.



EMERGENCY LANE KEEPING A full suite of technologies to help you avoid unintentional lane departure. Keeps you centered in the lane either by steering wheel action or braking in an emergency situation.



INTELLIGENT EMERGENCY BRAKING spots objects and applies the brakes if there is a risk of a low-speed collision with a car, pedestrian or cyclist. Added Junction Support further boots safety by helping avoid collision at junctions.

*ProPILOT is available on a limited range of vehicles and only on Automatic Transmissions. ProPILOT is an Advanced Driver Assist technology but cannot prevent collisions. ProPILOT is intended for "Eyes on/ Hands On" for highways only (road separated by Barriers). Navi-link supports traffic sign recognition which may not detect and read all traffic signs in all conditions. Driver should monitor all traffic sign and obey traffic laws.

It is the driver's responsibility to stay alert, drive safely and remain in control of the vehicle at any time.

**Feature available depending on version, as standard or only as option (at an extra charge).

You should not rely solely on driver convenience features. Some features may not work in all conditions and circumstances. Speed and other limitations apply. For terms and conditions relating to Nissan technologies, please contact your Nissan dealer or www.nissan.xx



Seamlessly connected to your world

The 12.3" HD touchscreen⁽¹⁾ in the New Nissan X-Trail is your portal to NissanConnect: through intuitive navigation, advanced technology and more. Our smartphone App offers a growing range of services including sending journey plans to your new Nissan X-Trail. When inside your car, connect your phone to start using your preferred Apps thanks to Apple CarPlay^{®(2)} and Android Auto^{™(2)}. And wherever you are, it keeps you informed about the status of your car. You're all set for your adventures on the go.



GOOGLE ASSISTANT AND ALEXA⁽⁵⁾⁽⁶⁾ COMPATIBILITY

Use NissanConnect car capabilities to control your vehicle or home by voice command using Alexa or Google Assistant. Free service ⁽⁷⁾

⁽¹⁾ HD touchscreen is only available N-Connecta and above grades

⁽²⁾ Apple CarPlay[®] and Android Auto[™] are available free of charge, depending on model and/or grade.

⁽³⁾ Connecting a mobile phone to use NissanConnect should only be done when the car is parked safely. Use of the system should always be in accordance with the rules of The Highway Code. Drivers should only use the system when it is safe to do so. Users should be aware of the potential for hands-free technology to distract attention from the road, which could impact on having full control of the vehicle.

⁽⁴⁾ To use the NissanConnect services you need a NissanConnect user account and have to register and log in to NissanConnect with your username and password. To use the free NissanConnect App, you need a smartphone with a compatible iOS or Android operating system and a SIM card with data option with an existing or separate mobile phone contract between you and your mobile service provider. All services are subject to mobile network coverage. The use of NissanConnect on-board internet is made possible via an integrated wireless internet connection. Data packets are to be obtained via selected external mobile communication providers in accordance with their terms and conditions (depending on the availability in your country).

⁽⁵⁾ Feature available depending on version, as standard or only as option (at an extra charge).

⁽⁶⁾ Amazon, Alexa and all related marks are trademarks of Amazon.com, inc. or its affiliates. Alexa Built-In available in England, France, Germany, Spain, Italy.

⁽⁷⁾ Nissan on Google Assistant and Alexa, Driving History & Analysis, Nissan Help & Assistance, Breakdown Assistance are available free of charge for a period of 7 years, depending on model and/or grade.

For more information, please visit www.XXXXX or contact your Nissan dealer or [phone number/e-mail address]. The feature responsiveness and use can be impacted when car is receiving a bad signal. For optimal use, please make sure your car is under good network coverage.



Scan the code to download now the NissanConnect Services app and connect it to your New Nissan.





Safety and car health

In trouble? Breakdown Assistance calls roadside assistance services when you need them, while Vehicle Health Report informs you of the status of your car

Navigation & driving

Get where you need to go with Door-to-Door Navigation by sending a navigation route straight from your smartphone to your navigation system. With Driving History & Analysis, check the distance you've driven, the number of trips you've made and more in the NissanConnect Services App

Connectivity

Connect your Android or iOS device for seamless connectivity including voice control⁽³⁾. Access your favourite music, messaging and other Apps to stay informed and entertained as you drive.

Convenience and comfort

Access remote services including Remote Door Lock/Unlock, Remote Horn/Lights and My Car Finder from the NissanConnect Services App⁽⁴⁾. And if you ever need help, Nissan Assistance is just a click away.





Family Size Matters for this Electrified Family SUV

Forget the usual hassle of loading child seats. With rear doors that open to 85° and versatile seating layouts for up to 7*, stress-free family adventures start the moment you leave. Whether in the front, 2nd or 3rd row seats, all passengers can feel relaxed with 3-Zone Air Conditioning* and ergonomic seats for comfort on the longest journeys.



7 seats



5 seats



4 seats



2 seats

*Feature available depending on version, as standard or only as option (at an extra charge).

Discover the details that make a difference

Family adventures feel so comfortable with design details that make your journeys smoother. From rear-window sunshades* that roll neatly away, to USB ports* front and 2nd row to keep everyone's devices fully charged. When it comes to loading, enjoy up to 16 configurations with adaptable luggage boards* and 60:40 sliding 2nd row to personalise your load space even further and ensure easy access to 3rd row.



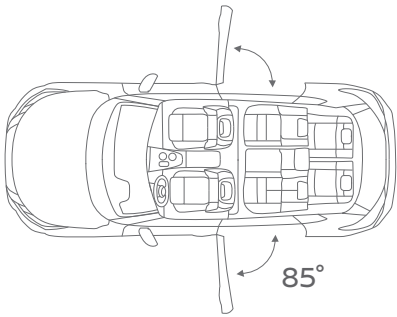
Floating centre console



Butterfly opening central console



Isofix fixing



85° rear door opening



Rear Sunshade*



USB ports in the 2nd row*



3-zone air conditioning*



**Feature available depending on version, as standard or only as option (at an extra charge).*

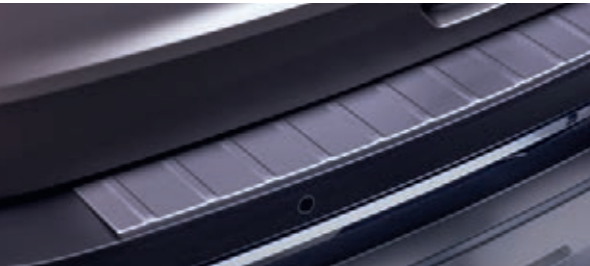
Tailor your All-New Nissan X-Trail with Nissan Genuine accessories

Take your family to any adventure with comfort by customizing your X-Trail with Nissan Genuine accessories. From cross bars to side steps your X-Trail can adapt to all your family and trip needs. Discover more accessories by contacting your closest Nissan dealer.



ROOF BOXES 🍌
Increase your X-Trail's versatility with this custom-built roof box. Available in four different sizes, starting from 90L & available in medium and large sizes from 480L to 630L capacity.

Ranger 90L – 290L Capacity – 7kg
Small – 380L Capacity – 13kg
Medium – 480L Capacity – 15kg
Large – 630L Capacity – 17,5kg



REAR BUMPER PROTECTOR
Designed to fit your X-Trail, it protects your rear bumper from scratches and other wear when you load or unload your trunk.



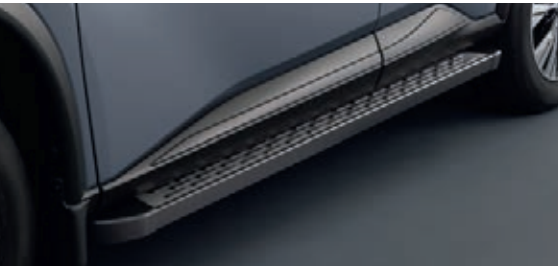
TOW BAR
Towing capacity up to 2,000kg Vertical load 100kg.



REVERSIBLE TRUNKLINER
One side rubber, one side velour.



ILLUMINATED WIRELESS KICK PLATE
For premium look and easy to clean, it helps protect your car from scratches and other wear.



SIDE STEP
LED lights between front and rear tires. Goes on when you press the key fob or open doors. Fades in and out with the dome light.



KOGARASHI WINTER WHEEL 18" 🍌
Black or silver.



LUXURY FLOOR MATS
Crafted with denser fibers than our velour mats for a soft, comfortable feel and everyday durability.



VELOUR FLOOR MATS
Protection, quality and safety, designed to fit the new X-Trail's cabin perfectly.



RUBBER FLOOR MATS
Rubber floor mats are easy to clean and they may better protect your car from grime and moisture. They offer durability and longevity.



CROSS BARS
Steel bars integrated into existing roof rails. Maximum weight limit of 75kg.

Accessories and any additional equipment fitted by the customer may have an impact on the communicated range figures of the car. Nissan Genuine Accessories are covered by the new vehicle warranty of 3 years/100,000km (whatever comes first), if fitted by a Nissan dealer or Nissan repairer before Vehicle Handover or during the new vehicle warranty period. Genuine Accessories fitted outside of the new vehicle warranty period or by a Third Party or by the Customer are only covered by the Nissan Genuine Parts and Accessories Warranty of 12 months/unlimited mileage.

🍌 Nissan Select Accessories provided by Nissan approved partners. They are providing warranty under their terms and conditions, which are one year warranty minimum. For further details please contact your Nissan dealer.

ENGINE & DIMENSIONS

	Mild Hybrid engine (5 seats)	Mild Hybrid engine (7 seats)	e-POWER 2WD engine (5 seats)	e-POWER AWD engine (5 seats)	e-POWER AWD engine (7 seats)
A - Overall length (mm)	4680				
B - Wheelbase (mm)	2705				
C - Overall width without mirrors (mm)	1840				
D - Overall height (mm)	1725				
Displacement (cc)	1476-1497		1477-1497		
Combined output (HP/PS)	161/163		201/204	211/213	
Transmission	Xtronic CVT				
Max. torque (NM)	300		330 (FR)	330 (FR) + 195 (RR)	
Acceleration 0-100km/h (s)	9,6		8,0	7,0	7,2
Max. speed (km/h)	200		170	180	
WLTP combined CO ₂ emissions (g/km)	from 161*	from 164*	from 131*	from 143*	from 146*
WLTP combined fuel consumption (l/100km)	from 7.1*	from 7.2*	from 5.8*	from 6.4*	from 6.3*
Mass in running order vehicule with all fluids & driver (kg)	1664-1744	1715-1781	1800-1883	1935-1994	1988-2024
Max. gross vehicle weight (max. weight of the car fully loaded) (kg)	4100	4085	2895	3995	4035
Max. gross train weight (vehicle + trailer) (kg)	2100	2285	2245	2345	2535
Max. towing capacity (kg)	2000	1800	670	1800	1650
Boot space Behind 2 nd row (L)	585	485	575	575	485
Boot space up to roof with all folded seats (L)	1424	1298	1396	1396	1298
Fuel tank capacity (L)	55	55	55	55	55



*Feature available depending on version, as standard or only as option (at an extra charge).



Service Contracts

Give your Nissan X-Trail the care it deserves with a Nissan Service Contract and save money in the long run. Nissan Maintenance Contract covers all the scheduled operations recommended by Nissan and specified in the owner's manual & warranty booklet. Maintenance Contract allows you to know from the start how much your maintenance will cost and protects you against price inflation. In addition to the scheduled operations, you can benefit from the replacement of wear and tear parts such as wiper blades or brake pads by subscribing to a Full Maintenance Contract. Select the duration that covers your needs and benefit from the use of Nissan Genuine Parts fitted by our trained technicians, at a discounted price. A well maintained vehicle has a greater resale value. If you sell your Nissan before your contract expires, the Service Contract will be transferred to the new owner. So do not wait any longer and subscribe to a Nissan Service Contract for extra peace of mind

Extended Warranty

Nissan Extended Warranty gives you the opportunity to extend your warranty for a longer period or mileage. Select the contract that best suits your driving usage. In case of a repair, only Nissan genuine parts will be used and fitted by Nissan trained technicians.

FOR MORE INFORMATION CONTACT
YOUR NISSAN DEALER OR REPAIRER

GRADES

VISIA

- LED headlamp
- Rear parking sensors
- Auto lights electric & heated mirrors
- Manual A/C
- Spare wheel (on Mild Hybrid)
- Gearshift paddle (on Mild Hybrid)
- 18" alloy wheel

ACENTA

- Visia equipments
- + Rear view camera
- + 8" NissanConnect display
- + Dual A/C
- + i-Key

N-CONNECTA

- Acenta equipments
- + 12.3" fully digital meter
- + 12.3" HD NissanConnect display
- + Around View Monitor with moving object detection
- + Privacy glass
- + Ambient lighting

TEKNA

- N-Connecta equipments
- + 19" alloy wheel
- + 10.8" windscreen head-up display
- + Full LED headlamps
- + 15W wireless charger
- + ProPILOT with Navi-link
- + Handsfree power tailgate
- + LED illuminated Gear Knob (e-POWER/e-4ORCE only)
- + Full auto park (e-POWER/e-4ORCE only)

TEKNA +

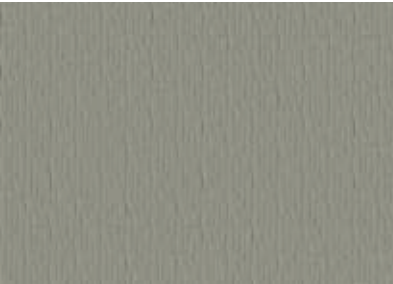
- Tekna equipments
- + 20" alloy wheel
- + Part premium leather
- + Sunroof
- + Rear Sunshade
- + BOSE®
- + Heated Windscreen
- + Heated Steering Wheel
- + Heated Rear Seat

TRIMS

FABRIC
VISIA / ACENTA / N-CONNECTA



SYNTHETIC LEATHER
GREY
TEKNA (option)



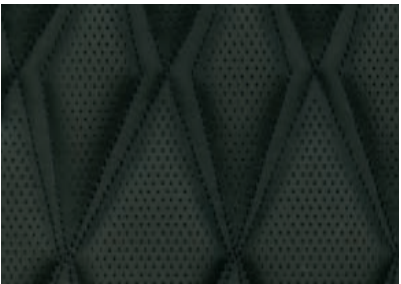
PART PREMIUM LEATHER
TAN
TEKNA (option) / TEKNA +



SYNTHETIC LEATHER
BLACK
TEKNA (option)



PART PREMIUM LEATHER
BLACK
TEKNA (option) / TEKNA +



WHEELS

18" ALLOY
VISIA / ACENTA / N-CONNECTA



19" ALLOY
TEKNA



20" ALLOY
TEKNA (option) / TEKNA +



COLOUR PALETTE

5 BASIC COLOURS



Solid White - **QAK**



Pearl White - **QAB**



Silver - **K23**



Grey - **KAD**



Diamond Black - **G41**

5 COLOUR VARIATIONS



Orange - **EBL**



Blue - **RBY**



Tinted Red - **NBL**



Champagne Silver - **KAY**



Ceramic Grey - **KBY**

5 TWO-TONE COMBINATIONS



Pearl White & Roof Black - **XBJ**



Blue & Roof Black - **XEU**



Orange & Roof Black - **XEV**



Champagne Silver & Roof Black - **XEW**



Ceramic Grey & Roof Black - **XFU**

GRADES

VISIA

- LED headlamp
- Rear parking sensors
- Auto lights electric & heated mirrors
- Manual A/C
- Spare wheel (on Mild Hybrid)
- Gearshift paddle (on Mild Hybrid)
- 18" alloy wheel

ACENTA

- Visia equipments
- + Rear view camera
- + 8" NissanConnect display
- + Dual A/C
- + i-Key

N-CONNECTA

- Acenta equipments
- + 12.3" fully digital meter
- + 12.3" HD NissanConnect display
- + Around View Monitor with moving object detection
- + Privacy glass
- + Ambient lighting

TEKNA

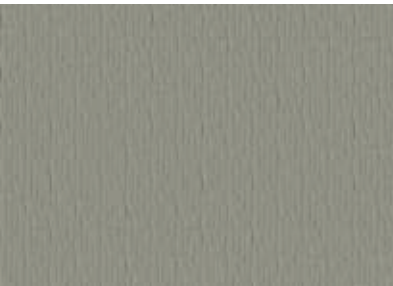
- N-Connecta equipments
- + 19" alloy wheel
- + 10.8" windscreen head-up display
- + Full LED headlamps
- + 15W wireless charger
- + ProPILOT with Navi-link
- + Handsfree power tailgate
- + LED illuminated Gear Knob (e-POWER/e-4ORCE only)
- + Full auto park (e-POWER/e-4ORCE only)

TRIMS

FABRIC
VISIA / ACENTA / N-CONNECTA



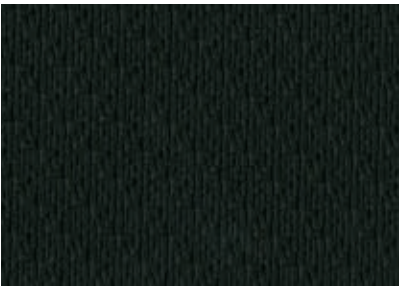
SYNTHETIC LEATHER
GREY
TEKNA (option)



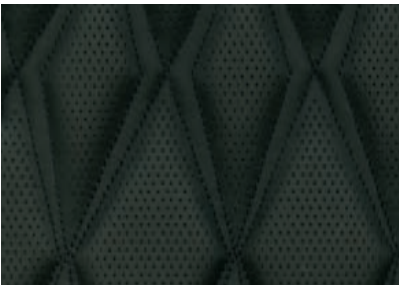
PART PREMIUM LEATHER
TAN
TEKNA (option)



SYNTHETIC LEATHER
BLACK
TEKNA (option)



PART PREMIUM LEATHER
BLACK
TEKNA (option)



WHEELS

18" ALLOY
VISIA / ACENTA / N-CONNECTA



19" ALLOY
TEKNA



20" ALLOY
TEKNA (option)



COLOUR PALETTE

5 BASIC COLOURS



Solid White - **QAK**



Pearl White - **QAB**



Silver - **K23**



Grey - **KAD**



Diamond Black - **G41**

5 COLOUR VARIATIONS



Orange - **EBL**



Blue - **RBY**



Tinted Red - **NBL**



Champagne Silver - **KAY**



Ceramic Grey - **KBY**

5 TWO-TONE COMBINATIONS



Pearl White & Roof Black - **XBJ**



Blue & Roof Black - **XEU**




Orange & Roof Black - **XEV**



Champagne Silver & Roof Black - **XEW**



Ceramic Grey & Roof Black - **XFU**



Deep dive into the New Nissan X-Trail experience: www.nissan-europe.com/X-Trail

Follow Nissan X-Trail on Facebook, Twitter and Youtube.

Every effort has been made to ensure that the content of this publication is correct at the time of going to press (August 2022). In accordance with the company's policy of continuously improving its products, Nissan Europe reserves the right to change at any time the specification and the vehicles described and shown in this publication. Nissan dealers will be informed of any such modifications as quickly as possible. Please check with your local Nissan dealer to receive the most up-to-date information. Because of the limitations of the printing processes used, the colours shown in this brochure may differ slightly from the actual colours of the paint and interior trim materials used. All rights reserved. Reproduction in whole or part of this brochure without the written permission of Nissan Europe is forbidden. This brochure is made from chlorine free paper – MY22 X-Trail brochure 08/2022 – Printed in EU. Created by DESIGNORY, France and produced by eg+ worldwide, France – Tel.: +33 1 49 09 25 35.